

MIRROR



RANGE OF SERVICES



DIMENSIONS & WEIGHT

MODEL LONDON

HxWxD: 180 x 110 x 63 cm

WEIGHT: 80 - 110 kg (depending on the equipment)

MODEL MANCHESTER

HxWxD: 157 x 95 x 63 cm

WEIGHT: 65 - 100 kg (depending on the equipment)

MODEL YORK

HxWxD: 157 x 95 x 63 cm

WEIGHT: 65 - 100 kg (depending on the equipment)

MODEL CAMBRIDGE (43" touchscreen)

HxWxD: 136 x 82 x 27 cm

WEIGHT: 52 kg (depending on the equipment)



TECHNICAL DATA

MODEL LONDON

- 75 inch touchscreen
- 65 inch OLED display

MINI PCi7

- IT11 Mini-PC with Intel® Core™ i7 Intel NUC 11th generation i7-11390H
- 32 GB RAM
- 1 TB SSD hard disk
- Intel® Iris® Xe-Graphics for Intel® UHD-Graphics for i7-13620H
- Comprehensive selection of connections, including two USB4-connections and two HDMI 2.0-connections

- Intel® Bluetooth® 5.2 and Wi-Fi 6E for faster connections
- Dimensions (WxHxD):
120 mm x 110 mm x 50 mm



TECHNICAL DATA

MODEL MANCHESTER

- 65 inch touchscreen
- 55 inch OLED display

MINI PCi7

- IT11 Mini-PC with Intel® Core™ i7 Intel NUC 11th generation i7-11390H
- 32 GB RAM
- 1 TB SSD hard disk
- Intel® Iris® Xe-Graphics for Intel® UHD-Graphics for i7-13620H
- Comprehensive selection of connections, including two USB4-connections and two HDMI 2.0-connections

- Intel® Bluetooth® 5.2 and Wi-Fi 6E for faster connections
- Dimensions (WxHxD):
120 mm x 110 mm x 50 mm



TECHNICAL DATA

MODEL YORK

- 65 inch touchscreen
- 43 inch LED display

MINI PCi5

- IT13 Mini-PC with Intel® Core™
13th generation i5-13500H
- 16 GB RAM
- 512 GB SSD hard disk
- Intel® Iris® Xe-Graphics for i5-13500
- Comprehensive selection of connections,
including two USB4-connections and two
HDMI 2.0-connections
- Intel® Bluetooth® 5.2 and Wi-Fi 6E for
faster connections

- Dimensions (WxHxD):
120 mm x 110 mm x 50 mm



TECHNICAL DATA

MODEL CAMBRIDGE

- 55 inch touchscreen
- 43 inch LED display

MINI PCi5

- IT13 Mini-PC with Intel® Core™
13th generation i5-13500H
- 16 GB RAM
- 512 GB SSD hard disk
- Intel® Iris® Xe-Graphics for i5-13500
- Comprehensive selection of connections,
including two USB4-connections and two
HDMI 2.0-connections
- Intel® Bluetooth® 5.2 and Wi-Fi 6E for
faster connections

- Dimensions (WxHxD):
120 mm x 110 mm x 50 mm



TECHNICAL DATA - CAMERA

MODEL LONDON / MANCHESTER / YORK / CAMBRIDGE

CANON EOS R100 WITH LENS

- sensor: APS-C
- approx. 24,1 megapixels CMOS-sensor
- 7,5 cm (3 inch) LC-display
- OLED EVF
- 4K Videos
- WLAN
- Bluetooth
- Camera lens RF-S 18-45mm f4,5-6,3 IS STM
- Colour: black

The camera can be used in portrait and landscape format.



TECHNICAL DATA - FLASH UNIT

MODEL LONDON / MANCHESTER / YORK /CAMBRIDGE

TTL FLASH UNIT WITH POWER ADAPTER AND SPEEDBOUNCE

- Easy to use, even for people with no fundamental knowledge of photographics
- By using a power adapter, you can get rid of batteries and accumulators
- Softer illumination of the motifs
- Reduces hard shadows
- The round shape of the speedbounce ensures natural reflections in the eyes of the photographed persons

ADDITIONAL ADVANTAGES OF STUDIO FLASH UNITS WITH SOFTBOXES:

- Soft light thanks to the softbox
- Optimal illumination of the motifs
- Better exemption for greenscreen and blue-screen photo shoots
- Steady power connection (230V)

Choose between two studio flash units:

- Hensel studio flash unit with softbox: stable metal-housing, security-glass, 6 infinitely adjustable apertures
- Studio flash unit with softbox: simple operation with 200Ws flash output, light quality 5600K, protection of overvoltage/overheating/overload



TECHNICAL FEATURES

MODEL LONDON / MANCHESTER / YORK / CAMBRIDGE



MIRROR / DISPLAY / HANDLING

- Crisp, crystal clear graphics
- Full body photos
- Perfectly matched transmission value
 - perfect reflection on the viewer side
 - true-colour reproduction on photographers side
- Easy to use
- Push and scratch resistant

BUILD-IN COOLER

- Warm air from the inside gets transported outward
- No over-heating of the photobooth, even after a long period of use



LED RING / LED FRAME



LED RING

- Part of the basic equipment
- Guides the view of the guest from live view to the camera before trigger
- Countdown before trigger
- Colours individual programmable
- Additional optical highlight

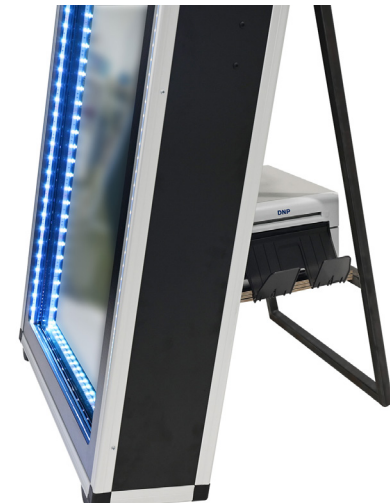
FRAME WITH LED BAND (OPTIONAL)

- Works as an eye-catcher
- Colours individual programmable



PROCESSING

- Stable edges protected by metal strips
- No visual rivets or screws
- Smooth surface for attaching brandings
- Lockable
- Easy and secure transport
- Transportable through wheels





DIMENSIONS & WEIGHT

MODEL LEEDS 50"

HxWxD: 150 x 80 x 15 cm

WEIGHT: 52 kg

TRANSPORT CASE 50"

HxWxD: 165 x 91 x 30 cm

WEIGHT: 30 kg

MODEL LEEDS 43"

HxWxD: 136 x 62 x 15 cm

WEIGHT: 35 kg

TRANSPORT CASE 43"

HxWxD: 153 x 73 x 29 cm

WEIGHT: 28 kg



TECHNICAL DATA

MODEL LEEDS 43" | 50"

43 | 50 inch touchscreen (LED display)

MINI PCi7

- IT11 Mini-PC with Intel® Core™ i7 Intel NUC 11th generation i7-11390H
- 32 GB RAM
- 1 TB SSD hard disk
- Intel® Iris® Xe-Graphics for Intel® UHD-Graphics for i7-13620H
- Comprehensive selection of connections, including two USB4-connections and two HDMI 2.0-connections

- Intel® Bluetooth® 5.2 and Wi-Fi 6E for faster connections
- Dimensions (WxHxD):
120 mm x 110 mm x 50 mm



TECHNICAL DATA - CAMERA

MODEL LEEDS 43" | 50"

CANON EOS R100 WITH LENS

- sensor: APS-C
- approx. 24,1 megapixels CMOS-sensor
- 7,5 cm (3 inch) LC-display
- OLED EVF
- 4K Videos
- WLAN
- Bluetooth
- Camera lens RF-S 18-45mm f4,5-6,3 IS STM
- Colour: black



TECHNICAL DATA - FLASH UNIT / LED RING / LED LIGHT

MODEL LEEDS 43" | 50"

TTL FLASH UNIT WITH POWER ADAPTER AND SPEEDBOUNCE

- Easy to use, even for people with no fundamental knowledge of photographics
- By using a power adapter, you can get rid of batteries and accumulators
- Softer illumination of the motifs
- Reduces hard shadows
- The round shape of the speedbounce ensures natural reflections in the eyes of the photographed persons



TECHNICAL FEATURES

MODEL LEEDS 43" | 50"



MIRROR / DISPLAY / HANDLING

- Crisp, crystal clear graphics
- Perfectly matched transmission value
 - perfect reflection on the viewers side
 - true-colour reproduction on photographers side
- Easy to use
- Push and scratch resistant
- Speaker-system with 3,5 mm socket

BUILD-IN COOLER

- Warm air from the inside will be transported outwards
- No over-heating of the photobooth, even after a long period of use



LED RING / LED LIGHT



LED RING

- Part of the basic equipment
- Guides the view of the guest from live view to the camera before trigger
- Countdown before trigger
- Colours individual programmable
- Additional optical highlight

LED LIGHT

- Provides background light for photography
- All-around dimmable LED light



TRANSPORT CASE

TRANSPORT CASE 43" | 50"

- Part of the basic equipment
- Stable edges protected by metal strips
- Easy and secure transport
- Transportable through wheels





DIMENSIONS & WEIGHT

MODEL GLASGOW

Ø: 95 cm

WEIGHT: 25 kg (without stand)

MODEL LIVERPOOL

Ø: 57 cm

WEIGHT: 14 kg (without stand)

MODEL OXFORD

WxHxD: 51,5 x 160 x 20,5 cm

WEIGHT: 45 kg

TECHNICAL DATA

MODEL GLASGOW

- 19 inch ELO touch LED display
- moveable forwards and backwards

MINI PCi5

- IT13 Mini-PC with Intel® Core™
13th generation i5-13500H
- 16 GB RAM
- 512 GB SSD hard disk
- Intel® Iris® Xe-Graphics for i5-13500
- Comprehensive selection of connections,
including two USB4-connections and two
HDMI 2.0-connections
- Intel® Bluetooth® 5.2 and Wi-Fi 6E for
faster connections

- Dimensions (WxHxD):
120 mm x 110 mm x 50 mm



TECHNICAL DATA

MODEL LIVERPOOL

- 15 inch ELO touch LED display
- moveable forwards and backwards

MINI PCi5

- IT13 Mini-PC with Intel® Core™
13th generation i5-13500H
- 16 GB RAM
- 512 GB SSD hard disk
- Intel® Iris® Xe-Graphics for i5-13500
- Comprehensive selection of connections,
including two USB4-connections and two
HDMI 2.0-connections
- Intel® Bluetooth® 5.2 and Wi-Fi 6E for
faster connections

- Dimensions (WxHxD):
120 mm x 110 mm x 50 mm



TECHNICAL DATA

MODEL OXFORD

- 23,8 inch ELO touch LED display
- moveable forwards and backwards

MINI PCi5

- IT13 Mini-PC with Intel® Core™
13th generation i5-13500H
- 16 GB RAM
- 512 GB SSD hard disk
- Intel® Iris® Xe-Graphics for i5-13500
- Comprehensive selection of connections,
including two USB4-connections and two
HDMI 2.0-connections
- Intel® Bluetooth® 5.2 and Wi-Fi 6E for
faster connections

- Dimensions (WxHxD):
120 mm x 110 mm x 50 mm



TECHNICAL DATA - CAMERA

MODEL GLASGOW / LIVERPOOL / OXFORD

CANON EOS R100 WITH LENS

- sensor: APS-C
- approx. 24,1 megapixels CMOS-sensor
- 7,5 cm (3 inch) LC-display
- OLED EVF
- 4K Videos
- WLAN
- Bluetooth
- Camera lens RF-S 18-45mm f4,5-6,3
IS STM
- Colour: black



TECHNICAL FEATURES

MODEL GLASGOW / LIVERPOOL / OXFORD



MIRROR / DISPLAY / HANDLING

- Crisp, crystal clear graphics
- Perfectly matched transmission value
 - perfect reflection on the viewers side
 - true-colour reproduction on photographers side
- Easy to use
- Push and scratch resistant
- Speaker-system with 3,5 mm socket

BUILD-IN COOLER

- Warm air from the inside will be transported outwards
- No over-heating of the photobooth, even after a long period of use



LED RING / LED RING LIGHT

LED RING

- Part of the basic equipment in model Oxford
- Guides the view of the guest from live view to the camera before trigger
- Countdown before trigger
- Colours individual programmable
- Additional optical highlight

LED RING LIGHT

- All-around dimmable LED ring light
- Punctual flashing on release



TECHNICAL DATA - PRINTER OPTIONAL

DNP DS-620 / CITIZEN CX-02 Compact /
Fuji ASK-400

- Printer technology: Thermosublimation
- Resolution (dpi): 300 x 300 (high speed mode) (max. speed), 300 x 600 (high quality mode) (max. quality)
- Print formats: 5x15 cm, 10x15 cm, 13x18 cm, 15x15 cm, 15x20 cm und 15x23 cm
- Print time for a 10x15 cm picture: 8,9 seconds
- Print capacity per roll: 400 pictures in format 10x15 cm
- Paper feed: Paper rolls
- Printouts with matt or shiny surface
- Energy savings up to 0,5 W (standby mode)

- Printer driver for Windows XP / Vista / 7 / 8 / 10, Mac OS 10.9 to 10.12
- Connection: USB 2.0
- Buffer storage: 64 MB
- Range of delivery: Printer, power adapter, ribbon cassette, paper holder



MADE IN GERMANY



FROM THE IDEA TO THE FINISHED PRODUCT

All of our Magic Mirrors are produced in-house and are supervised by our carpenter- and electricians, respectively our photograph masters. So we remain flexible for you and are able to respond to your individual needs.

- High quality materials
- Precise processing
- Timeless design



FURTHER FEATURES



INTERACTIVE IMAGE RECORDINGS

- Motivation of the guests through colourful animations
- Triggering of the photos via voice-control, noise level or movement possible
- Insert emojis on photo
- Photo signature of the own photo



SOFTWARE FUNCTIONS



INDIVIDUAL LAYOUT

- Inserting of a logo or frame
- Personal signature on one image
- multiple images on one printout

IMAGE RECORDINGS

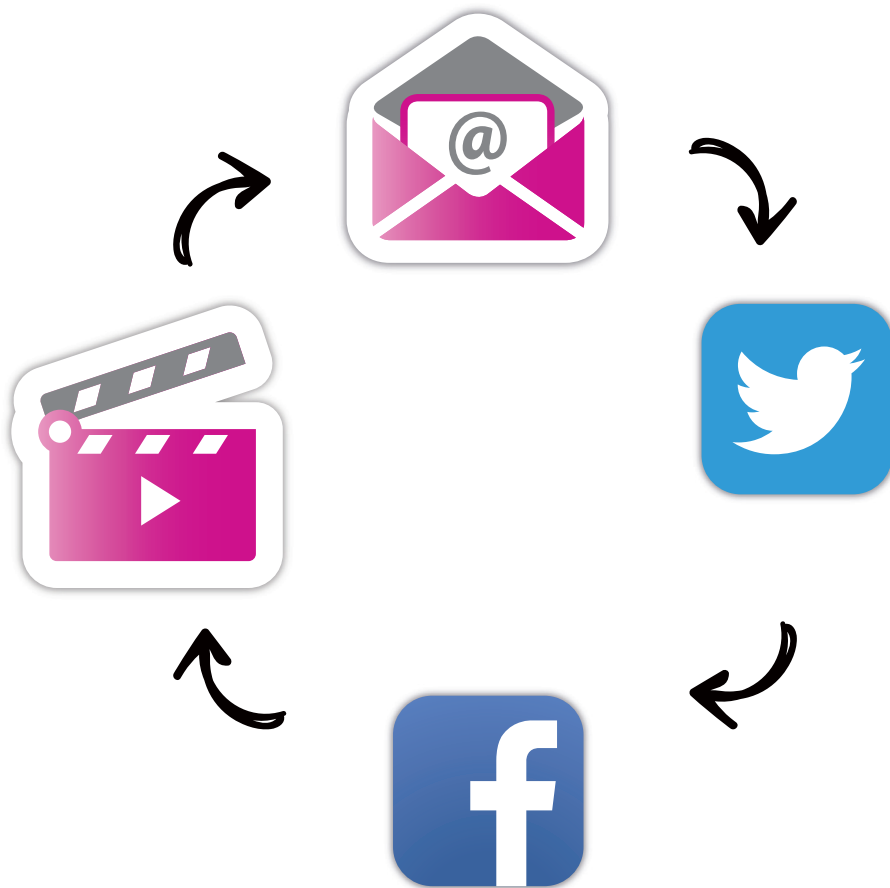
- Colour
- Black-white
- Sepia

IMAGE DOWNLOAD OPTIONS

- Imprint of a QR or number code
- Direct download of image via online gallery
- Combination of download and raffle



SOFTWARE FUNCTIONS



E-MAIL SHIPPING

- Direct shipping of the photos via e-mail
- Entering the e-mail address directly on the mirror
- Individual e-mail text or regards
- Saving of e-mail addresses (e.g. for customer acquisition)

SOCIAL MEDIA FUNCTIONS

- Facebook
- Twitter
- etc.

VIDEO RECORDINGS

- Length of the short video is adjustable
- Best sound quality by using external microphone

GREENSCREEN PHOTO SHOOT



FEATURES

- Free selection of the background which enables the user to prepare for various events and themes
- Selection of several backgrounds within the same photo shoot possible
- Perfect extraction of the motifs in front of the camera

**DO YOU HAVE ANY
FURTHER QUESTIONS?**



+49 (0)9321 - 1309091

